

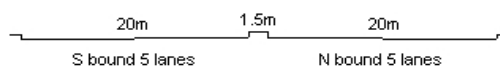
YEAR 2018

CORE STATION 5030

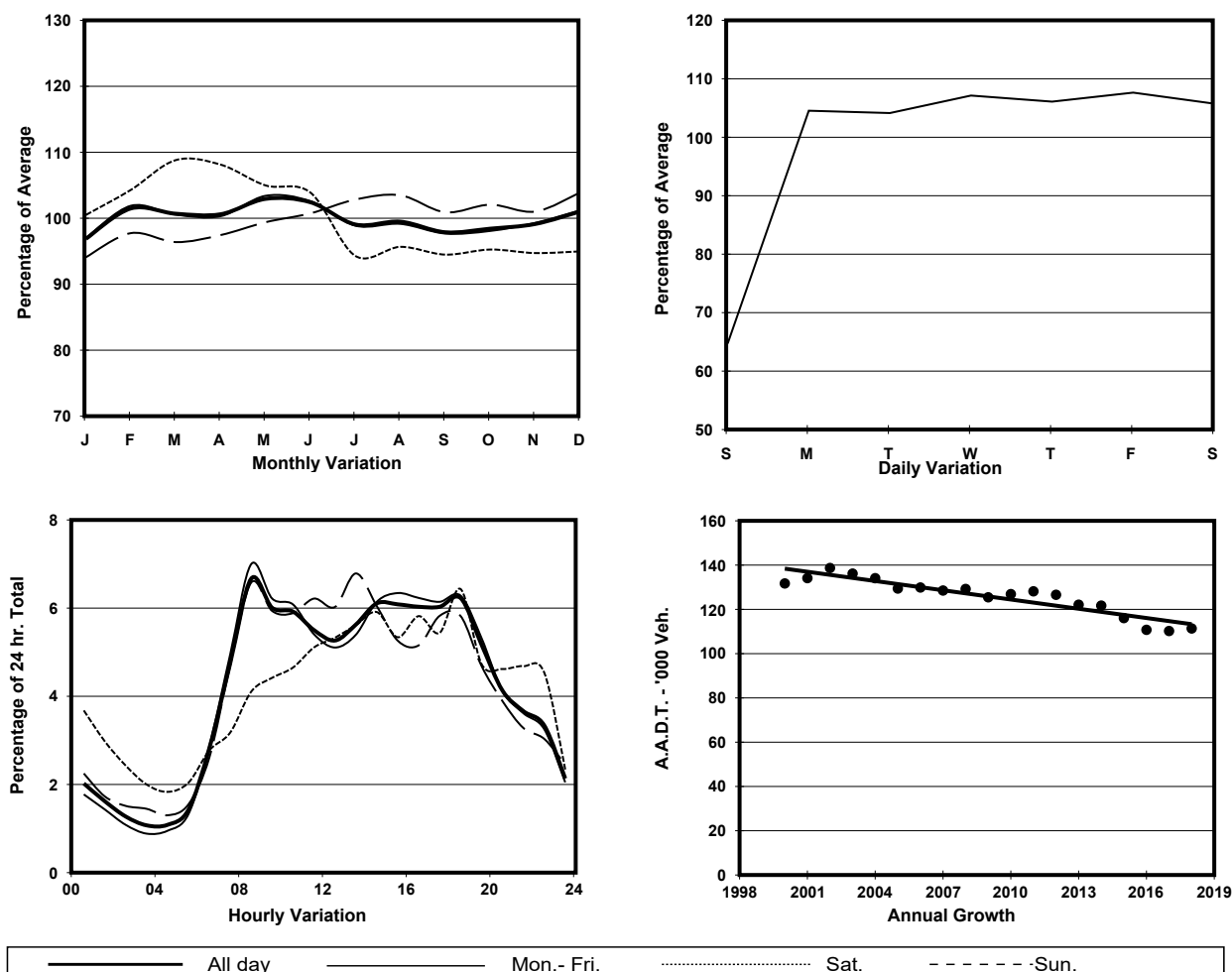
ROAD NETWORK MAJOR

ROAD TYPE URBAN TRUNK ROAD

LINK KWAI CHUNG RD (from KWAI CHUNG INT to TSUEN WAN RD)



1. TRAFFIC FLOW VARIATION AND GROWTH



2. TRAFFIC CHARACTERISTICS (BY DIRECTION)

Parameter	All - Day	Mon. - Fri.	Sat.	Sun.
SOUTH BOUND				
A.A.D.T.	53990	58260	57290	36580
R 12 / 24 - %	73.3	74.1	73.7	66.2
R 16 / 24 - %	87.2	88.1	85.9	82.3
AM Peak Hour	0800-0900	0800-0900	0800-0900	0900-1000
One-way flow at AM peak hour	4120	4700	4260	1880
T - % (AM)	-	13.4	-	-
PM Peak Hour	1800-1900	1700-1800	1800-1900	1800-1900
One-way flow at PM peak hour	3300	3610	3330	2640
T - % (PM)	-	16.6	-	-
Prop.of commercial vehicles - 16 hr.	-	15.3	-	-
NORTH BOUND				
A.A.D.T.	57380	61900	62870	37080
R 12 / 24 - %	67.3	68.7	67.2	56.6
R 16 / 24 - %	85.9	87.2	84.4	77.6
AM Peak Hour	0800-0900	0800-0900	0800-0900	0800-0900
One-way flow at AM peak hour	3310	3710	3650	1440
T - % (AM)	-	12.8	-	-
PM Peak Hour	1600-1700	1600-1700	1700-1800	1800-1900
One-way flow at PM peak hour	3690	4190	4030	2100
T - % (PM)	-	16.9	-	-
Prop.of commercial vehicles - 16 hr.	-	15.2	-	-

3. OTHER INFORMATION AND COMMENT

4. Vehicle classification and occupancy - Monday to Friday

Time		Class of vehicle									
		Motor Cycle	Private Car	Taxi	Private LB	PLB	Goods veh.		Non Fr. Bus	Fr. Bus	
							Light	M & H		SD	DD
0700-0800	Pro	5.9	30.0	17.7	2.1	2.6	23.6	9.5	4.7	0.1	3.9
	Ocp	1.1	1.1	2.0	4.8	10.5	1.3	1.2	11.9	1.0	59.7
0800-0900 Peak hour	Pro	4.7	41.0	13.1	0.8	3.0	24.4	7.2	3.0	0.0	2.9
	Ocp	1.0	1.2	2.0	4.0	11.5	1.4	1.3	16.9	0.0	67.1
0900-1000	Pro	2.6	32.6	15.5	0.6	1.8	32.7	9.7	1.0	0.0	3.5
	Ocp	1.1	1.3	2.0	1.8	10.2	1.4	1.6	5.8	0.0	32.5
1000-1100	Pro	2.7	26.7	13.6	0.7	1.2	37.5	13.1	1.1	0.0	3.3
	Ocp	1.0	1.2	2.0	1.6	8.0	1.3	1.3	8.7	0.0	28.2
1100-1200	Pro	3.0	30.0	11.9	0.7	1.1	36.3	12.5	1.2	0.0	3.3
	Ocp	1.1	1.3	1.9	1.6	7.2	1.3	1.3	16.3	0.0	29.0
1200-1300	Pro	2.6	32.7	10.6	0.7	1.7	33.7	12.6	2.2	0.0	3.1
	Ocp	1.1	1.2	2.1	3.6	8.4	1.3	1.3	6.8	0.0	30.3
1300-1400	Pro	2.2	31.7	12.0	0.8	1.1	32.9	14.5	1.6	0.0	3.2
	Ocp	1.1	1.4	1.9	1.4	5.8	1.3	1.2	16.8	0.0	32.8
1400-1500	Pro	2.3	31.4	12.0	0.6	1.0	36.0	12.8	1.2	0.0	2.9
	Ocp	1.1	1.3	2.1	1.2	7.5	1.3	1.2	8.8	0.0	37.1
1500-1600	Pro	2.4	32.4	11.9	0.6	1.4	36.3	10.8	1.1	0.0	3.1
	Ocp	1.0	1.3	1.8	1.8	8.3	1.3	1.3	7.2	0.0	35.8
1600-1700	Pro	3.2	35.6	12.8	1.1	1.2	28.1	12.5	2.2	0.0	3.4
	Ocp	1.1	1.2	1.8	2.6	10.5	1.3	1.2	6.9	0.0	41.4
1700-1800	Pro	6.0	37.6	11.7	1.0	2.0	26.7	8.7	2.7	0.1	3.6
	Ocp	1.1	1.3	1.9	3.3	13.7	1.3	1.2	12.5	1.0	54.6
1800-1900	Pro	6.5	48.5	11.1	0.6	3.6	18.6	5.8	2.1	0.0	3.3
	Ocp	1.1	1.2	2.1	1.9	12.9	1.2	1.1	11.4	0.0	72.8
1900-2000	Pro	3.5	55.8	11.4	0.2	4.2	11.9	6.1	3.3	0.0	3.6
	Ocp	1.1	1.3	2.0	3.0	12.7	1.3	1.2	16.3	0.0	54.2
2000-2100	Pro	4.5	48.3	17.1	0.0	4.3	11.1	7.2	2.8	0.0	4.7
	Ocp	1.1	1.4	1.9	0.0	10.5	1.4	1.1	6.4	0.0	41.3
2100-2200	Pro	4.9	42.9	24.3	0.0	4.4	10.8	6.0	1.5	0.1	5.1
	Ocp	1.1	1.4	1.9	0.0	10.0	1.3	1.2	12.9	1.0	39.8
2200-2300	Pro	3.9	49.0	21.8	0.0	5.2	9.6	4.8	1.3	0.0	4.4
	Ocp	1.1	1.3	2.0	0.0	10.7	1.3	1.1	14.3	0.0	45.4
16 hours	Pro	3.8	37.5	13.8	0.7	2.4	26.6	9.7	2.1	0.1	3.5
	Ocp	1.1	1.3	2.0	2.8	10.7	1.3	1.3	11.9	1.0	44.6

Legend

Pro. Proportion of vehicles in % (Sum may not add up to 100% due to figure rounding)*

Ocp. Average occupancy of vehicles including both driver and passengers*

M&H Medium and Heavy

***** All traffic data are collected from combined bounds except for one way traffic